



LENSLEY  
AUTOMATIC

The Lensley Automatic brings all the fun of a traditional photobooth to any event. With interchangeable lenses, color options, and backdrops the portrait combinations are endless.

Just press the screen and the booth shoots 4 photos and creates a 4x6" print with an area for custom branding.

The entire process takes under a minute!

Our "booth" is open air, which means that you can capture the party as well as those taking pictures at the booth (see examples). Or, it can be set up with curtains for a traditional photobooth look.

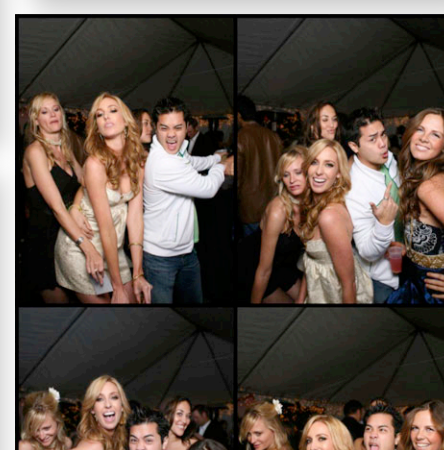
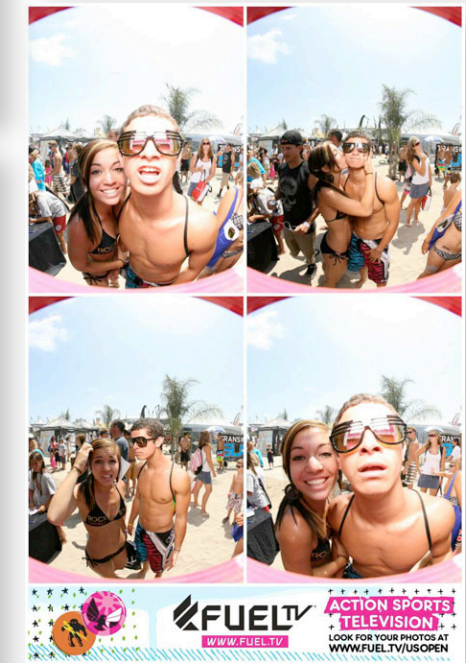
We provide full digital copies of the files as well as the option for online availability for guests to order reprints or to share with their friends via Facebook or Flickr.

Options:

- Black & White or Color
- Portrait or Landscape
- Lens choices, including Fisheye
- Background or Open

For booking or inquiries contact:

Jaime Macias  
hello@lensley.com  
(310) 895-0974





Booth Dimensions

- 6' Tall
- 16" Wide
- 22" Deep

Additional Options:

Branding Banner Design

Custom Backgrounds

Additional Displays

- 42" HDTV
- Projection
- In-venue A/V



Actual Size (4" x 6")